



www.energenics.com

1470 Don Street • Naples, Florida 34104

Telephone: (239) 643-1711
Fax: (239) 643-6081
Customer Service: (800) 944-1711

Installation & Operations Manual for Energenics Air Free Lint Filters

Table of Contents	Page 1
The Need for a Lint Filter / How it works	Page 2
Receiving and Installation	Page 3
AF Series Dimensional Chart	Page 4
AF-2 through AF-7 Dimensional Diagram	Page 5
AF-10 Top Discharge Dimensional Diagram	Page 6
AF-10 Side Discharge Dimensional Diagram	Page 7
Maintenance Requirements	Page 8
Parts List & Customer Service	Page 9

THE NEED FOR A LINT FILTER / HOW IT WORKS

Your new Energenics State-of-the-Art Lint Filter has evolved from over 30 years of research and development to be the optimum solution for catching up to 96% of all bypassed lint produced from textile dryers. 3 problems that are minimized by reducing excess lint are:

1. Dryer exhaust may be in close proximity to air-handling equipment such as A/C Units, Cooling Apparatus, and Fresh Air Intake systems.
2. When there is a longer exhaust run from the dryers to the outside atmosphere there is likely that the inside of the duct will accumulate with lint causing dryer inefficiency and creating a potential fire hazard.
3. Quite often the Laundry Room is located near the front of the building. When this occurs the duct is usually directed to the front of the building. This results in an unsightly mess in the landscaping.

The Air Free Lint filters key components are an internal lint screen for lint capture and a removable lint bag at the bottom of the filter for storage. When dryers are operating the lint screen which is similar to a parachute is blown up. As the dryer cycle progresses the lint screen forms a canopy which captures the lint while letting dryer exhaust flow efficiently through the screen. When dryers are off the lint screen sags, allowing the canopy to collapse shedding the lint into the storage bag. At the end of the shift the storage bag is emptied into a trash receptacle.

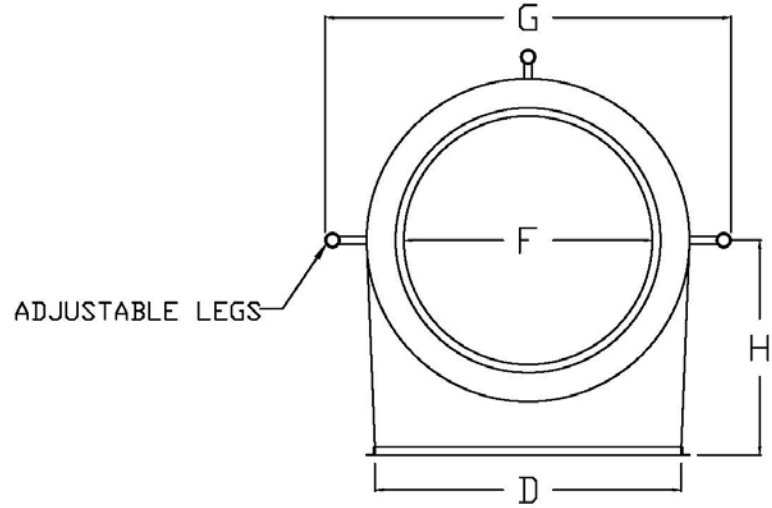
RECEIVING AND INSTALLATION

1. Inspect the filter inside and outside for damage.
2. Adjust the height and anchor the base plate to the floor.
3. Install the white mesh screen inside the filter housing.
4. Install the black vinyl lint bag to the bottom of the filter.
5. Duct individually from the dryers to the filter.
6. If the dryer ducts are too many or too large for the filter inlet have the duct installers fabricate a short adapter inlet to match to the filter.
7. For Outside installations, specify the side discharge with rain hood option from Energenics. Alternatively mount a "chinamans hat" on top of the filter (18 inches open space from the filter to the "hat") for outside installation. Your local duct fabricator can fabricate the "hat".
8. For low ceiling laundries use the Side Discharge Option for horizontal exhaust requirements.
9. The filter can be lowered to 16 inches from ground to filter bottom from our recommended standard of 24 inches. The lint bag will simply be harder to empty.
10. When ducting from the filter to the outside, direct the exhaust away from sensitive air handling equipment, even minor lint by-pass clogs compressors.
11. Duct runs longer than 50 feet to the filter are a problem, consult Energenics for review.

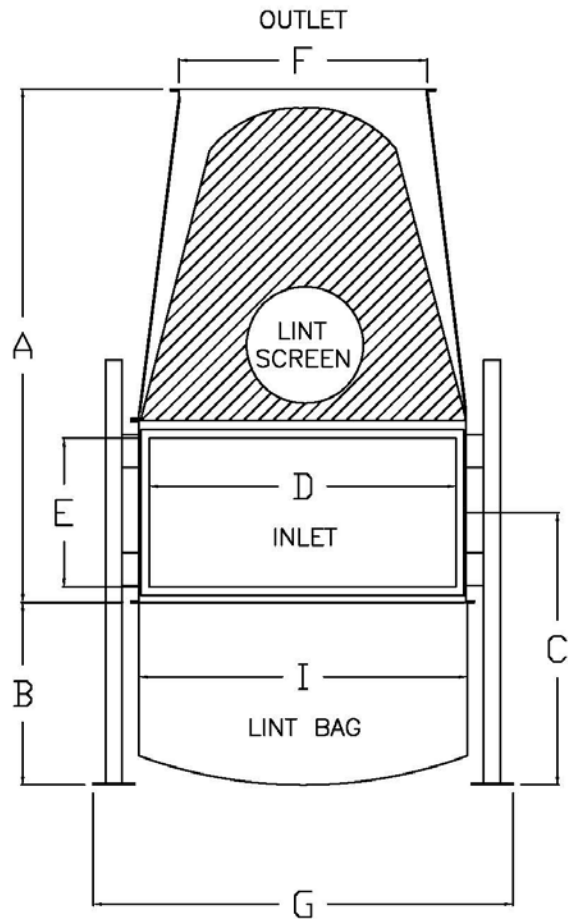
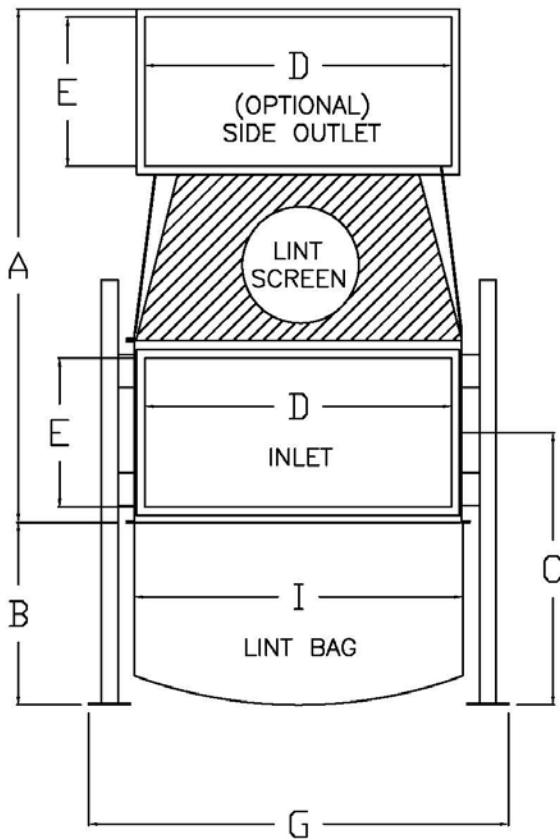
ALL AF-SERIES DIMENSIONAL CHART

	AF-2	AF-3	AF-7	AF-10-TOP	AF-10-SIDE
CFM	2,000	3,000	7,000	10,000	10,000
OPER. WT.	100	110	150	175	175
SHIP WT.	125	135	175	200	200
A	46	57	62	67 5/8	66
B	24	24	24	24	24
C	33	33	33	35 1/2	35 1/2
D	26	26	37	60	60
E	18	18	18	11 1/2	11 1/2
F	20	22	30	52	52
G	34	34	45	63 7/8	63 7/8
H	15	15	25	10 3/8	10 3/8
I	29	29	39	62	62
J	27	38	41	47	47
K	NA	NA	NA	23 1/4	23 1/4
L	NA	NA	NA	22	22

AF-2 THROUGH AF-7 DIMENSIONAL DIAGRAM

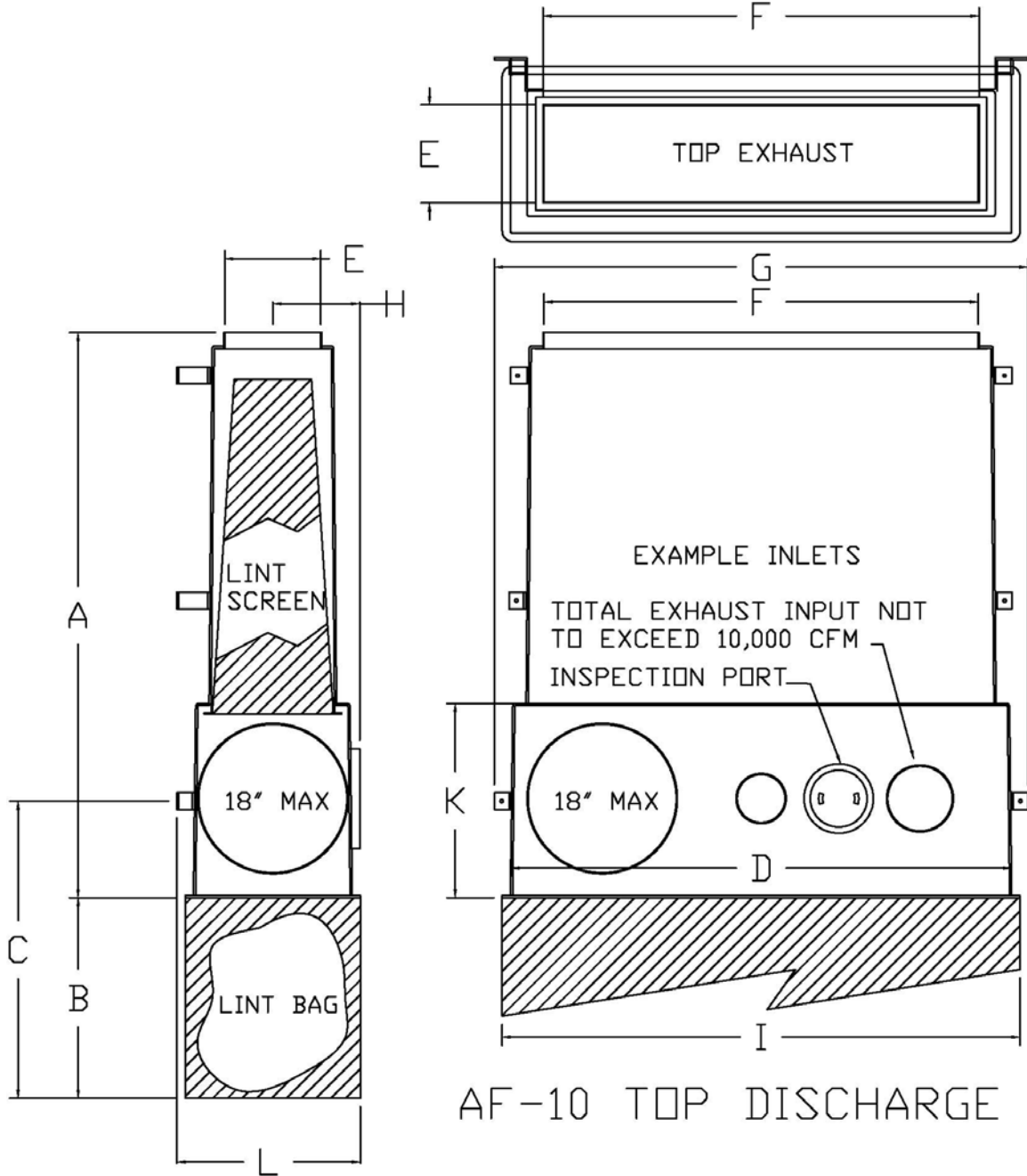


ROTATES 360 DEG.

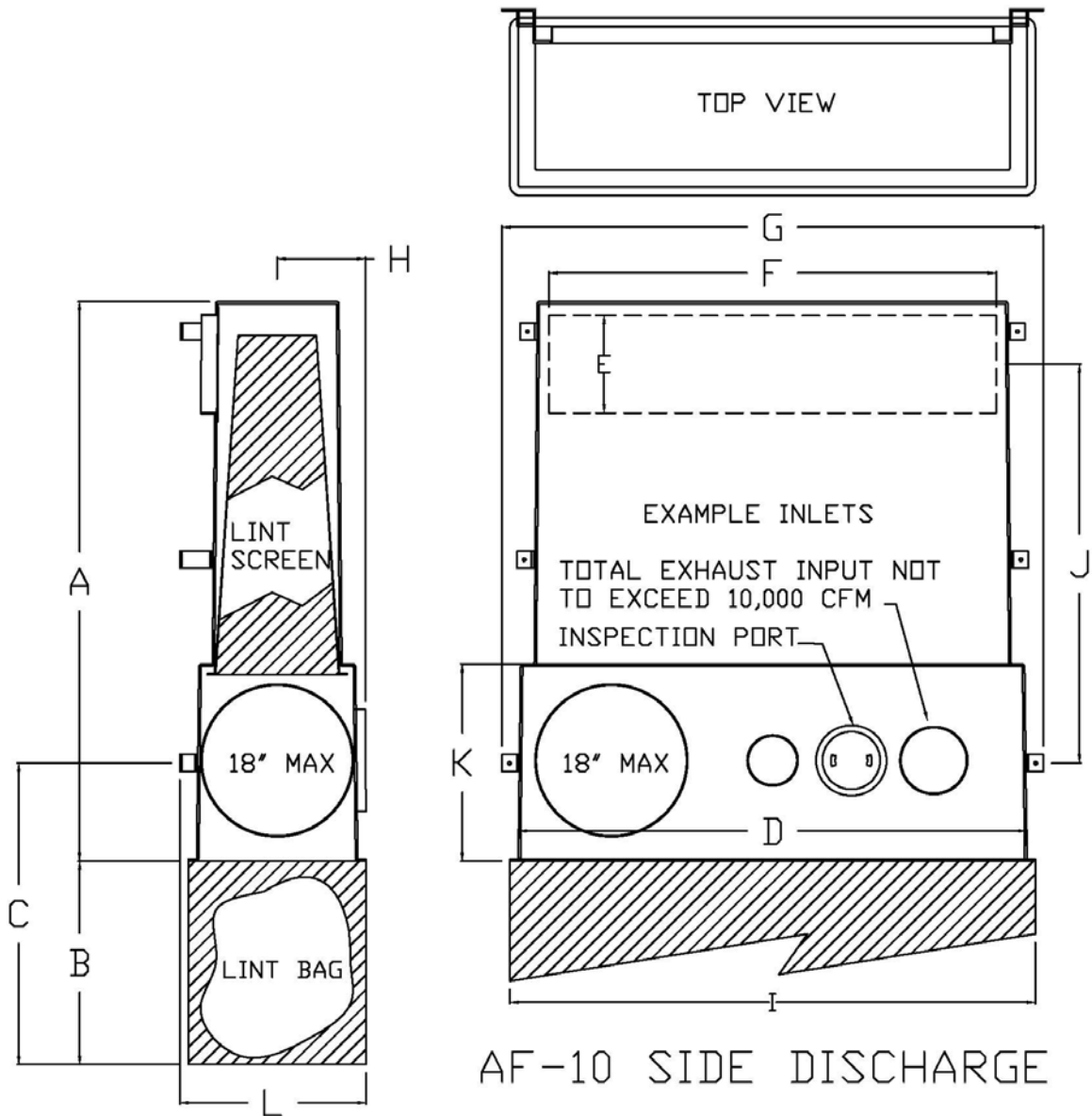


AF-2, 3 & 7 TOP & SIDE DISCHARGE

AF-10 TOP DISCHARGE DIMENSIONAL DIAGRAM



AF-10 SIDE DISCHARGE DIMENSIONAL DIAGRAM



MAINTENANCE REQUIREMENTS

The frequency of your maintenance requirements depends upon the number of hours of operation and upon variances in your product output. For a single-shift operation, without special problems, the frequency recommended below should suffice. You should set your own schedule based on your experience.

1. WEEKLY

Visually inspect the filter inside and outside, its controls and their operation. At time of such inspection, note and correct any discrepancies from normal operation.

Inspection should be made of the dryer for lint, which may back up and cause a fire if not cleaned. Empty the lint bag and clean the screen as required.

PARTS LIST & CUSTOMER SERVICE

ENERGENICS CUSTOMER SERVICE 1-800-944-1711

MODEL #	LINT SCREEN #	LINT BAG #
AF-2	AF-2-160	B-AF-2
AF-3	AF-3-160	B-AF-3
AF-7	AF-7-160	B-AF-7
AF-10	AF-10-160	B-AF-10