

## In-line Space Saver Lint Collector

### Standard Features:

- 20,000 CFM capacity
- 304 Stainless steel (16ga)
- UL508a PLC control
- Air solenoid valve for blow-down
- (3) Built-in logic methods for blow-downs
- Large access door
- Stainless steel lint screen w/ poly cap
- Lint collection bag
- Support legs
- Left hand inlet (shown); right available

### Optional Features:

- 14ga Stainless steel upgrade
- Side discharge (rotates 360°)
- Fire suppression system (FSS)
- Excess pressure alarm
- Inlet collars
- Compressed air storage tank
- Pre-plumbing & pre-wiring
- Magnahelic pressure gauge
- Additional radius inspection door:  
contact for available locations & as-built drawings
- Variable speed air flow optimizer (for long or undersized duct runs)
- Lint drum w/ flexible connector

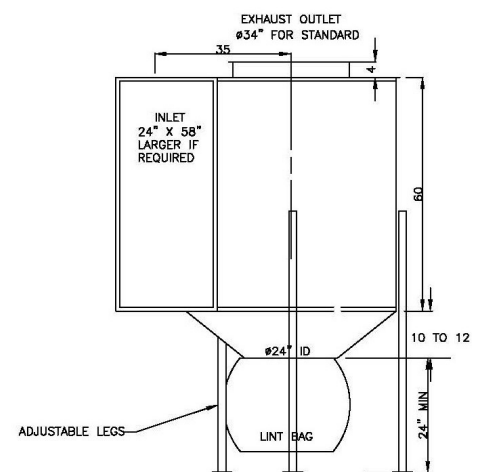
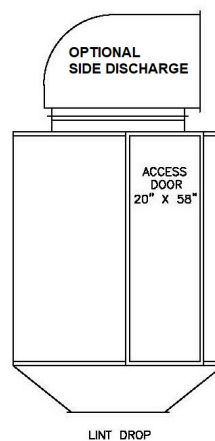
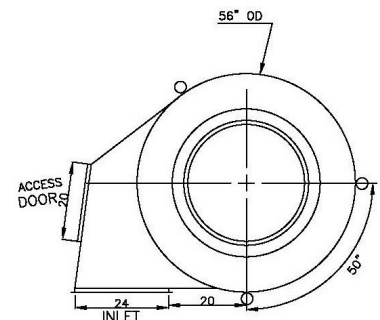
### Utility Requirements:

- 120/240v Single phase; 1.3/.65FLA
- 30ft<sup>3</sup> Compressed air per blow-down (2.5 SCFM compressor load)
- 1" Compressed air connection
- 1" Cold water connection for FSS (8 gpm when activated)

S-SERIES



S.S. filter w/ optional Air Flow Optimizer



Footprint 77" x 60"

