

FLAT MOUNT UTILITY FREE LINT FILTER (FOR OPL)

**PREVENT EQUIPMENT DAMAGE, UNSIGHTLY MESS, AND
POTENTIAL FIRE FROM EXCESSIVE LINT BYPASS**



AF-4 (FM) EXTERIOR INSTALL



AF-10 (FM) INTERIOR INSTALL



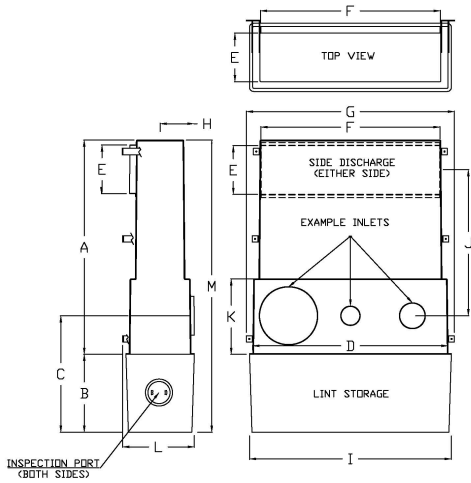
AF-4 (FM) INTERIOR INSTALL

This versatile lint filter has evolved from more than 30 years of research and development to be the optimum solution for capturing bypassed lint produced by OPL textile dryers.

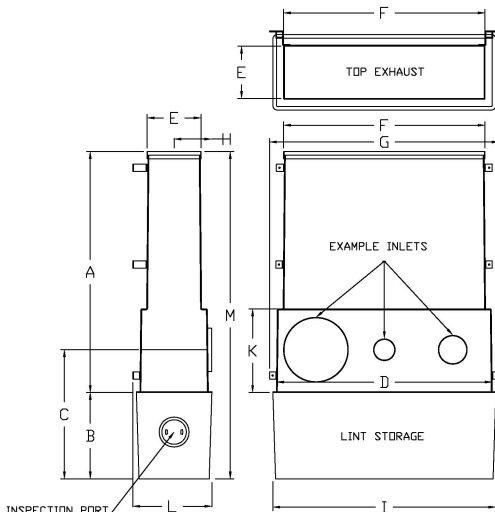
MAJOR BENEFITS

- Reduces lint build-up in exhaust ducts, therefore, reducing risk of fire
- Prevents damage to air-handling equipment near exhaust vents
- Protects expensive landscaping from unsightly mess
- Eliminates dryer lint bypass by up to 98%
- Self-cleaning
- For single or multi-dryer
- No power supply or compressed air required
- Zero operating cost!!

SPECIFICATIONS



AF-FM 2/4/10 FLAT MOUNT SIDE DISCHARGE



AF-FM 2/4/10 FLAT MOUNT TOP DISCHARGE

Model #	AF-2-FM TOP	AF-2-FM SIDE	AF-4-FM TOP	AF-4-FM SIDE	AF-10-FM TOP	AF-10-FM SIDE
CFM	2,000	2,000	4,000	4,000	10,000	10,000
Oper. Wt. Lbs	100	100	145	145	175	175
Ship Wt. Lbs	140	140	180	180	210	210
A	36	36	43	42	67	66
B	9 1/4	9 1/4	21	21	24	24
C	16 1/4	16 1/4	29 1/2	29 1/2	35 7/8	35 7/8
D	25 1/2	25 1/2	52	52	60	60
E	11	10	10 5/8	11	15	15
F	25 1/2	22	51	48	56	56
G	25 1/2	25 1/2	55 7/8	55 7/8	63 7/8	63 7/8
H	5 1/2	5 1/2	6 1/2	6 1/2	10 3/8	10 3/8
I	24 1/2	24 1/2	54	54	62	62
J	N/A	25	N/A	26	N/A	45
K	13 1/2	13 1/2	16	16	23 1/4	23 1/4
L	11	11	12 1/4	12 1/4	22	22
M	45 1/4	45 1/4	64 1/8	63 1/8	91	90

ADDITIONAL FEATURES AND BENEFITS

- Designed to operate indoors or outdoors
- UL Class 2 fire retardant fiberglass construction
- UV protection to resist extreme weather
- Equipped with Energenics' superior screen filtration allowing for sufficient air flow while capturing nearly all dryer lint
- Low cost installation

OPTIONS

- Optional fire suppression kit
- Available top or side exhaust outlet for ease of installation
- Energenics Airflow Optimizer (should be used for duct runs longer than 50 feet)

FLOOR, PAD, OR WALL SUPPORTED!

AVAILABLE SIZES: 2000, 4000, AND 10,000 CFM



800-944-1711



sales@energenics.com | energenics.com

